

# NIH Library Collaboration Pod 2 Workspace Remote Access Directions

National Institutes of Health Library

## For Windows

- Please make sure that your pc is connected to the **NIH VPN Client**
- Microsoft Edge and Firefox are best for connecting KVM
- Log into <https://librarypod2.ors.nih.gov/#/signin>

## For Mac

- Please make sure that your pc is connected to the **NIH VPN Client**
- Safari is best for connecting KVM
- Log into <https://librarypod2.ors.nih.gov/#/signin>

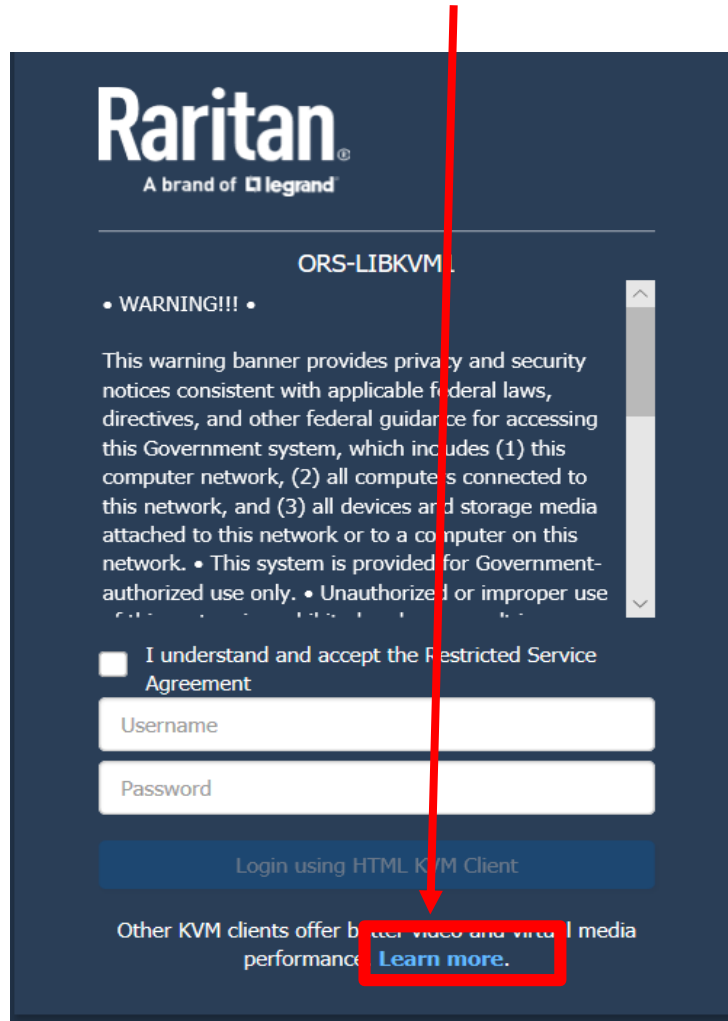
## Please do not Sign Out, Restart, or Shut off the Remote Workstation

We recommend that you do not save your data files on our workstations.

Save your data files back to your network directory or external storage to protect against loss or corruption.

**The NIH Library will routinely purge customer files from the workstations**

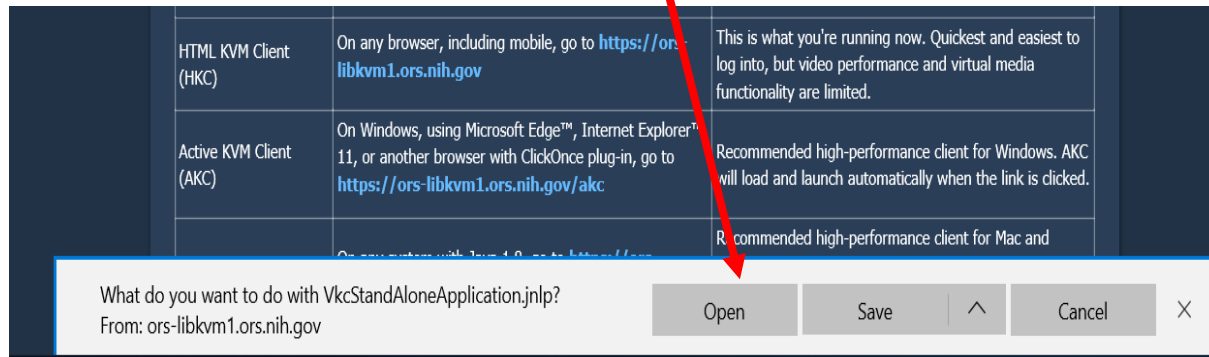
- First Click on **Learn More**



- Next On Client Options screen
- Select **“Virtual KVM Client Standalone (VKCS)”**

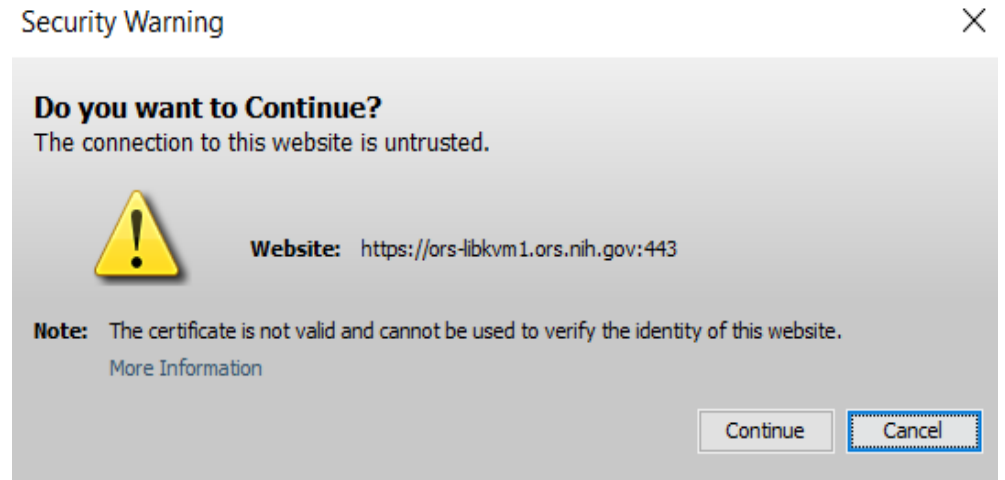
Client Options		
Client Name	How to Launch	Notes
HTML KVM Client (HKC)	On any browser, including mobile, go to <a href="https://ors-libkvm1.ors.nih.gov">https://ors-libkvm1.ors.nih.gov</a>	This is what you're running now. Quickest and easiest to log into, but video performance and virtual media functionality are limited.
Active KVM Client (AKC)	On Windows, using Microsoft Edge™, Internet Explorer™ 11, or another browser with ClickOnce plug-in, go to <a href="https://ors-libkvm1.ors.nih.gov/akc">https://ors-libkvm1.ors.nih.gov/akc</a>	Recommended high-performance client for Windows. AKC will load and launch automatically when the link is clicked.
Virtual KVM Client Standalone (VKCS)	On any system with Java 1.8, go to <a href="https://ors-libkvm1.ors.nih.gov/vkcs">https://ors-libkvm1.ors.nih.gov/vkcs</a>	Recommended high-performance client for Mac and Linux. After clicking link, VKCS will download. If browser does not do it automatically, click the downloaded .jnlp file (or ctrl-click on Mac) to launch.

- **Next** Click on **Open**



- **Then** on “Security Warning” click on **Continue**

- It may take up to 10 sec. for the KVM log in screen to come up.



- Login using NIH credentials

**Raritan**  
A brand of **legrand**

ORS-LIBKVM1

• WARNING!!! •

This warning banner provides privacy and security notices consistent with applicable federal laws, directives, and other federal guidance for accessing this Government system, which includes (1) this computer network, (2) all computers connected to this network, and (3) all devices and storage media attached to this network or to a computer on this network. • This system is provided for Government-authorized use only. • Unauthorized or improper use of this system is prohibited and may result in disciplinary action and/or

I understand and accept the Restricted Service Agreement

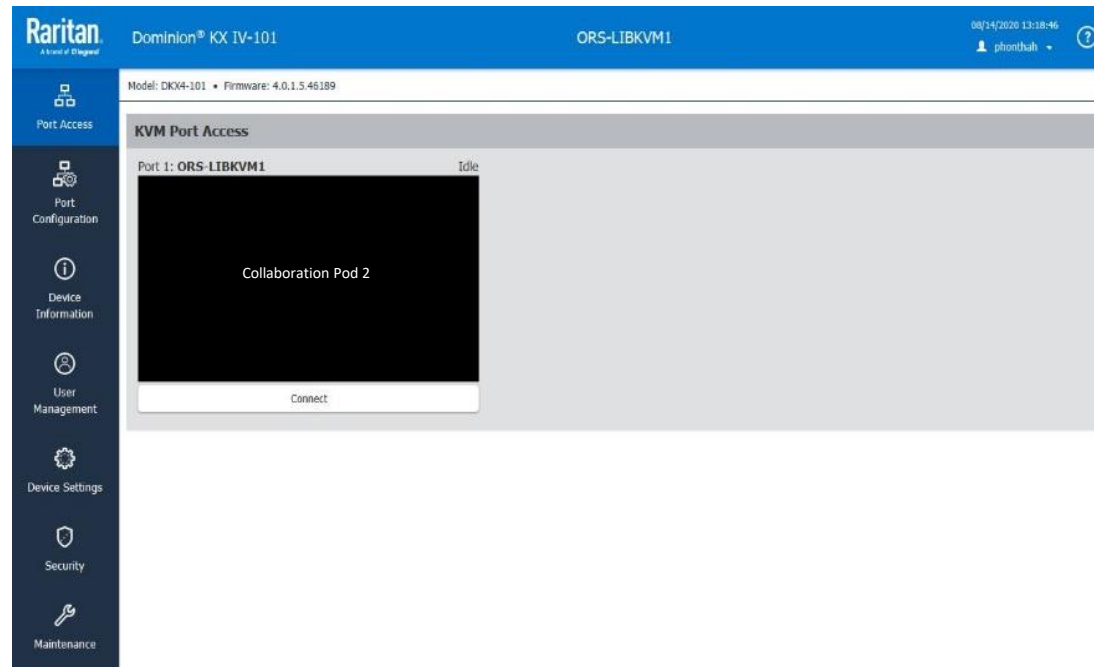
phonthah

.....

Login using Virtual KVM Client

Copyright 2019 • All Rights Reserved • Raritan Inc.

- Click on **connect** to Collaboration Pod 2

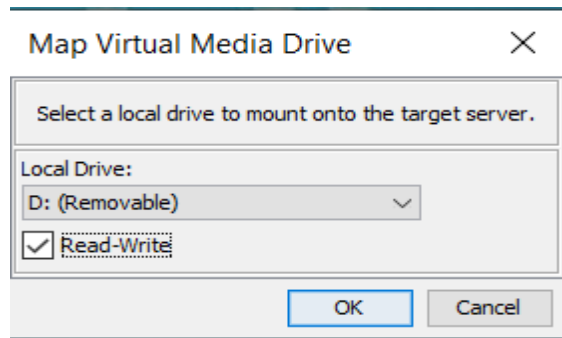


For the best display, use the following options:

- On “View” menu, select “**Scale Video**”
- On “Mouse” menu, select “**Absolute Mouse Mode**”

## ■ Windows

- Plug in USB device to your PC
- On “**Virtual Media**” menu, select “Connect Drive...)
- Check box “**Read-Write**”, click **OK**, then click **Yes**
- Successfully Connected pop up then click **OK**



## ■ Mac

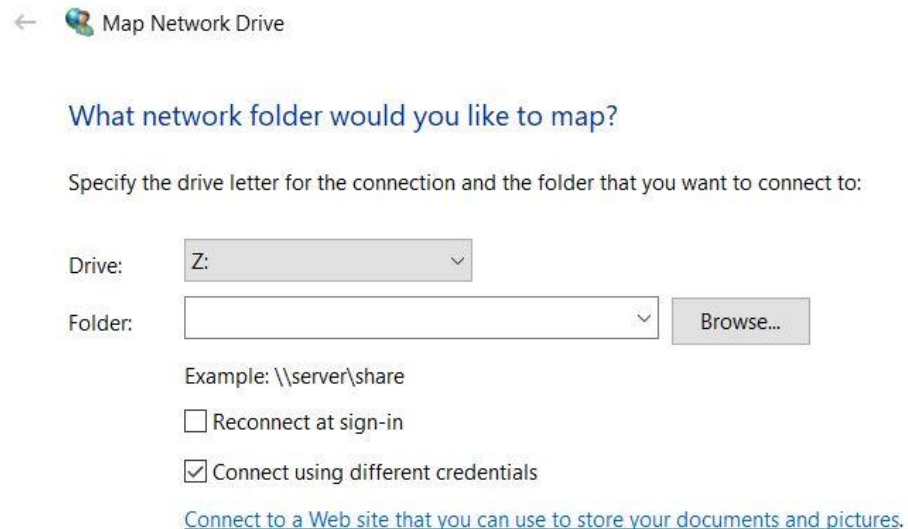
- Plug in USB device to your PC
- On “**Virtual Media**” menu, select “**Connect Files and Folders**”
- Map Virtual Media Files and Folders screen pops up
- Drag and drop the USB device from your Mac into the “**Drag and drop file and folder here**”
- Now your USB device is ready for usage

After you're done using the remote workstation, please remember to **disconnect** your USB device by clicking on “**Virtual Media**” menu and select “**Disconnect files and folders**”



# Mapping to your Network Drive or Folder

1. Right-click on “This PC” in File Explorer
2. Click “Map network drive...”
3. Popup Window
4. Use letter Z: for Drive:
5. Folder: [\\server\share](#) (you can get this from “This PC” on your NIH computer.)
6. Uncheck “Reconnect at sign-in
7. Check Connect using different credentials
8. Click “OK”
9. Enter your NIH credentials



← Map Network Drive

What network folder would you like to map?

Specify the drive letter for the connection and the folder that you want to connect to:

Drive: Z: ▼

Folder:  Browse...

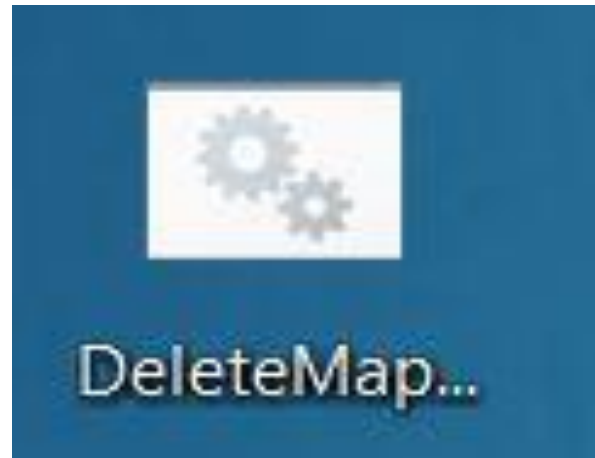
Example: \\server\share

Reconnect at sign-in

Connect using different credentials

[Connect to a Web site that you can use to store your documents and pictures.](#)

On the remote desktop “NIH Library Collaboration Pod 2”,  
double-click icon “DeleteMap...”



**Please do not Sign Out, Restart, or Shut off the Remote Workstation**

We recommend that you do not save your data files on our workstations.

Save your data files back to your network directory or external storage to protect against loss or corruption.

**The NIH Library will routinely purge customer files from the workstations**



**National Institutes of Health**  
*Office of Management*